

CP2500 (Attenuator)

ATTENUATOR

Conductive Plastic

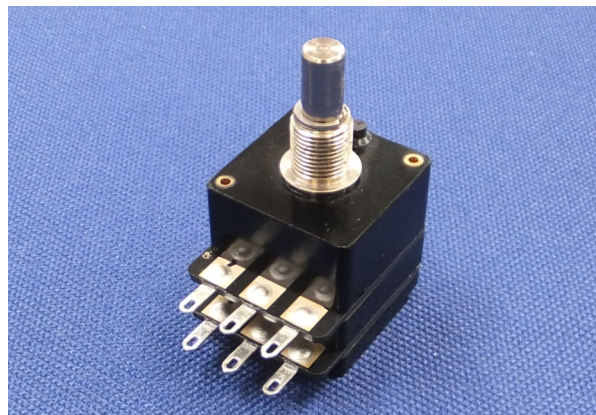
Low rotational noise level

Small size

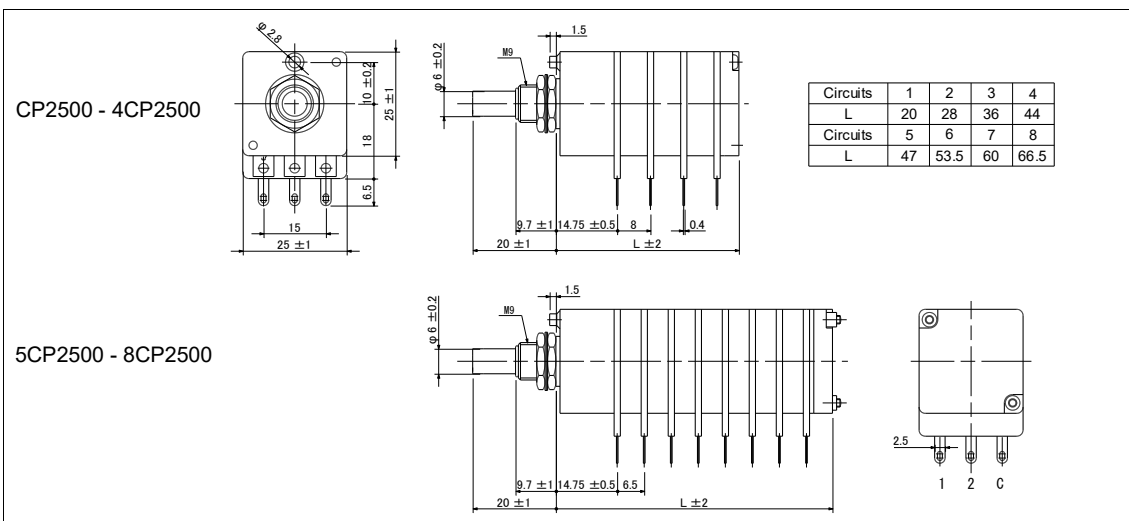
25mm square

High Quality

All parts are highly precise



Dimensions



Output Law Load: High impedance

| Degrees (CW-CCW) | 0 | 15 | 30 | 45 | 60 | 75 | 90 | 105 | 120 | 135 | 150 | 165 | 180 | 195 | 210 | 225 | 240 | 255 | 270 | 285 | 300 |
|------------------|---|----|----|----|----|----|----|-----|-----|-----|-----|-----|-----|-----|-----|-----|-----|-----|-----|-----|---------|
| Attenuation [dB] | 0 | 2 | 4 | 6 | 8 | 10 | 12 | 14 | 16 | 18 | 20 | 22 | 24 | 27 | 30 | 33 | 37 | 42 | 48 | 58 | Cut off |

Model number

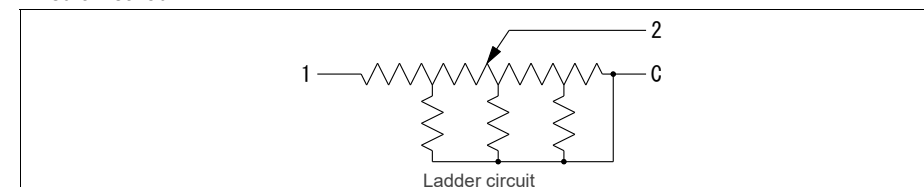
2
Number of circuit (2~8)
Blank: single circuit

CP2500
Product type

S
Mechanical click option
Blank: Without click
S: With click (15degrees step)
C: Center click

- **10K**
Total resistance

Circuit method



Electrical specifications

| | CP2500 |
|-----------------------------------|--|
| Circuit (Unbalanced) | Ladder circuit |
| Attenuation direction | CCW (Large attenuation & cut off) - CW (Small attenuation) |
| Total resistance (1-C) | 5k, 10k, 50k, 100kohm |
| Total resistance tolerance | ±20% |
| Attenuation accuracy (Load: high) | 0~10dB: ±1.0dB, ~30dB: ±2.0dB, ~42dB: ±3.0dB |
| Matching accuracy | 0~10dB: 1.0dB, ~30dB: 1.5dB, ~42dB: 2.5dB |
| Insertion loss | 0.5dB or less |
| Cut off (15kHz) | 85dB Min. |
| Voltage proof | 1 Min. at AC500V |
| Insulation resistance | 50Mohm or more at DC500V |
| Max rating | DC20V (0.1W) |
| Rotational noise level | 47mV or less (by JIS C 6443) |
| Rotational life | 100,000 Cycles Min. (18cycles/min, Sliding noise level: Less than 100mV) |

Mechanical specifications

| | CP2500 |
|--------------------------|---|
| Operating angle | 300 degrees ±5 degrees |
| Rotational torque | 0.1~1.5Ncm (Different by number of circuit) |
| Strength of Nut-Attached | 50Ncm |
| Attached Parts | Hexagonal nut (M9) |
| Stopper strength | 50Ncm |
| Push-pull strength | 50N |

General specifications

| | CP2500 |
|-------------------|--|
| Temp. range | -10 to +70 degrees C (Operating), -15 to +75 degrees C (Storage) |
| Relative humidity | 90%RH (No condensation) |

Note

- * This product is constructed by a ladder circuit. Cannot use it for a rheostat use (a use to change a resistance level).
- * Solder heat resistance: 350degrees C max, 5sec max, to 2 times. (Manual soldering only)
- * Special order of the shaft length is possible. Please contact us for details.