

# Attenuator Type-SR

# ATTENUATOR

## Low contact resistance

Silver alloy contact materials.

## 2 types attenuation circuits

Potentiometer, Bridged-H

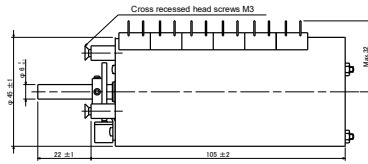
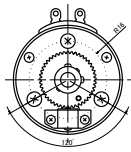
## Type-SR

Many interlocking movements type.

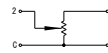


## Dimensions

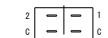
### S-1: 6P65CS



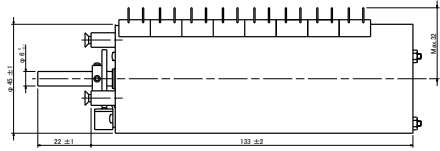
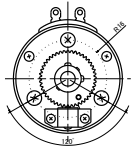
Circuit Method (6P65CS, 8P65CS)



Terminations (6P65CS, 8P65CS)



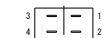
### S-2: 8P65CS



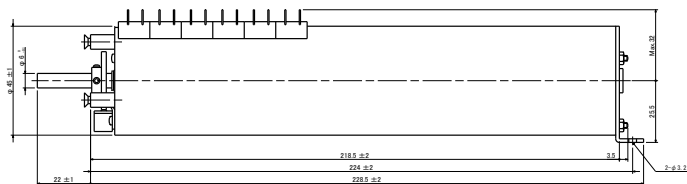
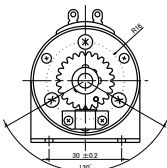
Circuit Method (6H50CS, 8H50CS)



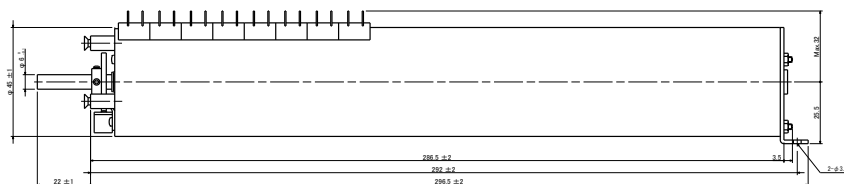
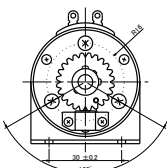
Terminations (6H50CS, 8H50CS)



### S-3: 6H50CS



### S-4: 8H50CS



## Model number

**6**      **H**      **50**      **C**      **S**      **= 600ohm**

Number of circuit    Circuit    Max attenuation    Product type    With clicks    Impedance  
 6: 6 circuits        P: Potentiometer  
 8: 8 circuits        H: Bridged-H

## STANDARD LINEUPS

Order Number	Model number / Impedance	Circuit	Attenuation types	Frequency Range	1step angle	Total Number of steps	Direction of attenuation	Dim.
S-P001	6P65CS-10kohm	P	BTS-65dB	DC~20kHz	8degs	40	CCW	S-1
S-P002	6P65CS-50kohm	P	BTS-65dB	DC~20kHz	8degs	40	CCW	S-1
S-P003	6P65CS-100kohm	P	BTS-65dB	DC~20kHz	8degs	40	CCW	S-1
S-P004	6P65CS-250kohm	P	BTS-65dB	DC~15kHz	8degs	40	CCW	S-1
S-P005	8P65CS-10kohm	P	BTS-65dB	DC~20kHz	8degs	40	CCW	S-2
S-P006	8P65CS-50kohm	P	BTS-65dB	DC~20kHz	8degs	40	CCW	S-2
S-P007	8P65CS-100kohm	P	BTS-65dB	DC~20kHz	8degs	40	CCW	S-2
S-P008	8P65CS-250kohm	P	BTS-65dB	DC~15kHz	8degs	40	CCW	S-2
S-H001	6H50CS-600ohm	H	BTS-50dB	DC~20kHz	15degs	21	CCW	S-3
S-H002	8H50CS-600ohm	H	BTS-50dB	DC~20kHz	15degs	21	CCW	S-4

\*The standard lineups are added or removed without notice.

## Electrical specifications

Type-SR	
Attenuation	BTS-50dB    0, 2, 4, ... (2dB step)..., 30, 32, 34, 37, 42, 50, cut off
	BTS-65dB    0, 1, 2, 3, ... (1dB step)..., 24, 25.5, 27, 28.5, 30, 31.5, 33.5, 35.5, 37.5, 39.5, 42, 45, 48.5, 53, 58, 65, cut off
Attenuation accuracy	Attenuation step    Error in step    Max. Attenuation
	0.5dB or less        Less than ±0.05    Less than ±0.1
	1~2dB                Less than ±0.1     Less than ±0.2
	3dB or more         Less than ±0.2     Less than ±0.4
Accuracy of Impedance	±2% (Impedance 600ohm), ±5% (other Impedance)
Cut off (15kHz)	80dB or more
Voltage proof	1 Min. at AC500V
Insulation resistance	100Mohm or more at DC500V
Input level	Max. 0.3W
Rotational life	30,000 Cycles Min. (18cycles/min, Insertion loss: 1dB or less)

## Mechanical specifications

Type-SR	
Operating angle	(Step angle) x (Number of steps) ±2degrees
Strength of Nut-Attached	100Ncm
Attached Parts	M3 screw (Length: Panel thickness + 3~5mm)
Stopper strength	50Ncm
Push-pull strength	50N

## General specifications

Type-SR	
Temp.range	-10 to +60 degrees C (Operating), -15 to +65 degrees C (Storage)
Relative humidity	80%RH (No condensation)

## Note

- \* Solder heat resistance: 350degrees C max, 5sec max, to twice. (Manual soldering only)
- \* The solder please use the thing of the same composition. (Solder for wire lapping sticks to a terminal.)  
Use solder: SN100C (Sn-0.7Cu-0.05Ni-Ge) NIHON SUPERIOR CO.,LTD.

- \* Cannot use this product for the signal line using phontom-48V.
- \* This product is an attenuator of the types to change resistance. Therefore, a switching noise may occur.

