

# CF-45T

**PROFADER™**

## Non-contact

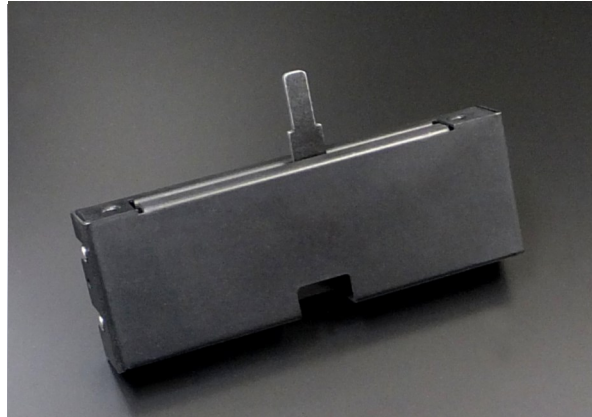
Long-term stability

## Digital output

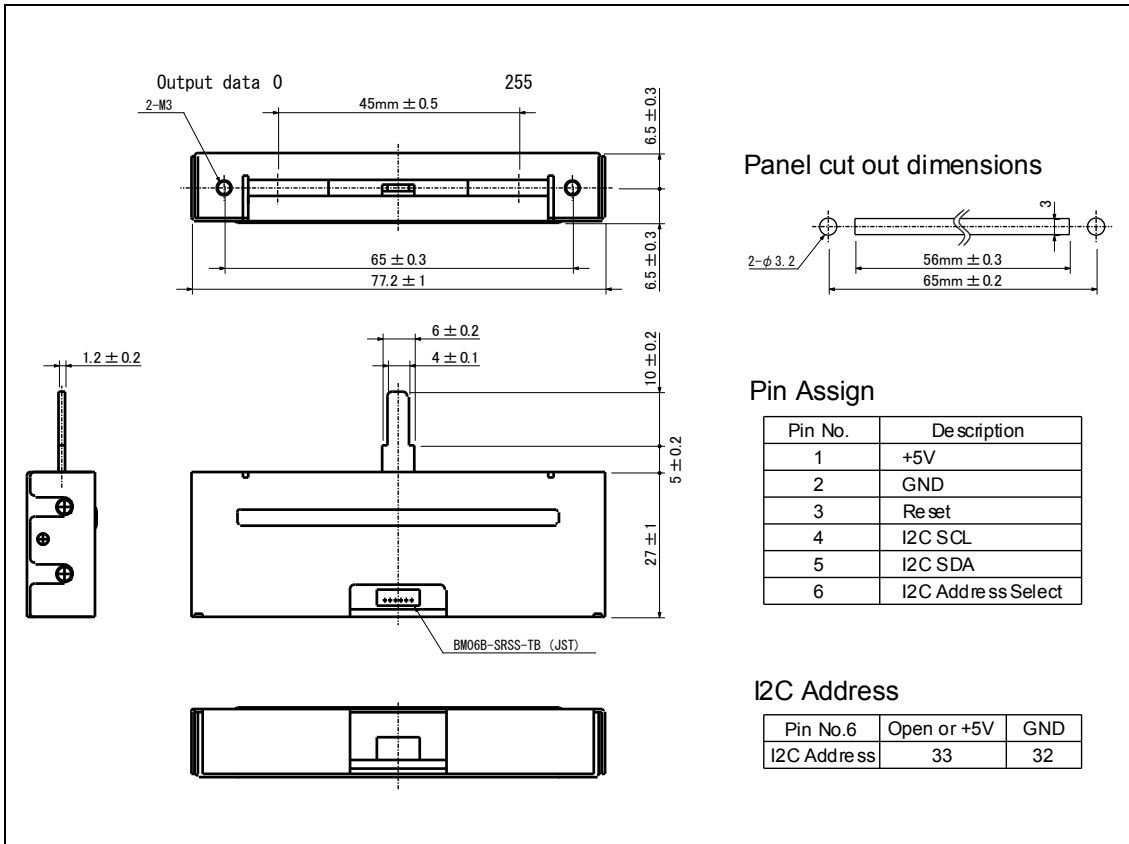
Facilitated in handling

## Dust protective

Horizontal style control bar



## Dimensions



## Model number

**CF** - **45** **I**  
 Product type Travel: 45mm Non-contact

## I<sup>2</sup>C specifications

CF-45T	
I <sup>2</sup> C Clock	400kbps / 100kbps / 50kbps
Slave address	33 or 32
General call address	Not Supported
Transfer data	MSB First
Response time	1ms or less (I <sup>2</sup> C Clock: 400kbps)
I <sup>2</sup> C Communication behavior	
Master	S Slave Address RW A Data Byte A P
CF-45	S SA6 SA5 SA4 SA3 SA2 SA1 SA0 1 1 0 D7 D6 D5 D4 D3 D2 D1 D0 1 P
I <sup>2</sup> C Bus	S SA6 SA5 SA4 SA3 SA2 SA1 SA0 1 0 D7 D6 D5 D4 D3 D2 D1 D0 1 P
S = Start condition P = Stop condition A = Acknowledge SA = Slave address D = Output data bits	
I <sup>2</sup> C Address	Pin No.6 Open or +5V I2C Address 33 GND I2C Address 32

## Electrical specifications

CF-45T	
Sensor system	Electrostatic capacitance type sensor
Output value	Absolute type
Communication system	I <sup>2</sup> C Slave
Operating voltage	5V: ±0.25V
Max. operating current	4mA Max.
Resolution	8bit (0~255)
Output Law	1bit = 45mm/256 (Linear)
Bit error	±2bit
Return Bit error	±3bit
Start up time	2sec
Voltage proof	1 Min. at AC100V
Insulation resistance	50Mohm or more at DC100V

## Mechanical specifications

CF-45T	
Stroke length	45mm±0.5mm
Operating force	0~0.1N
Strength of Nut-Attached	100Ncm
Attached Parts	M3 screw (Length: Panel thickness + 3mm)
Stopper strength	50N
Push-pull strength	50N

## General specifications

CF-45T	
Temp.range	-10 to +60 deg C (Operating), -20 to +70 deg C (Storage)
Relative humidity	90%RH (No condensation)

## Note

- \* Non-waterproof.
- \* Do not give severe shocks.
- \* Move to one end in Control-bar on the occasion of knob wearing, and can break into it slowly.